

## CT BUTTERFLYVALVE



### HEBEI CANTAI INTERNATIONAL TRADE CO., LTD

**Address:**  
Hebei Province, Cangzhou City, Botou City, North Side of Yingbin Road,  
Economic Development Zone

**Phone:**  
+86-199 3178 2065



Add me on WeChat

### HEBEI CANTAI INTERNATIONAL TRADE CO., LTD

河|北|灿|钛|国|际|贸|易|有|限|公|司

# COMPANY PROFILE

Hebei Cantai International Trade Co., Ltd. is a professional marine valve manufacturer integrating production and sales. The company is capable of designing and supplying a wide range of valves for various applications in accordance with international standards such as ANSI, JIS, DIN, GB, CB, CBM, and API, based on specific customer requirements.

We specialize in the supply of marine butterfly valves, check valves, and globe valves, as well as a comprehensive variety of valve components.

The company has established a complete and scientific quality management system and has obtained ISO quality certification, environmental management system certification, and occupational health and safety management certification. We are also able to provide product inspection certificates issued by internationally recognized classification societies such as CCS, ABS, DNV, NK, KR, and LR, ensuring a more reliable and refined service experience for our customers.

With a strong brand image and comprehensive pre-sales, in-sales, and after-sales services, Cantai Valves has become a competitive and promising enterprise in China's marine valve manufacturing industry. Adhering to the philosophy of "advanced technology ensures superior quality," the company has gained wide recognition for its integrity, strength, and product excellence.

We are committed to providing customers with comprehensive technical support and services, meeting diverse requirements in product design, manufacturing, and project selection, while delivering complete and efficient solutions.

With a rigorous management system, advanced production equipment, strong technical capabilities, a sound quality assurance system, an extensive marketing network, and professional service quality, the company has built a solid foundation for rapid development and earned widespread praise and recognition.

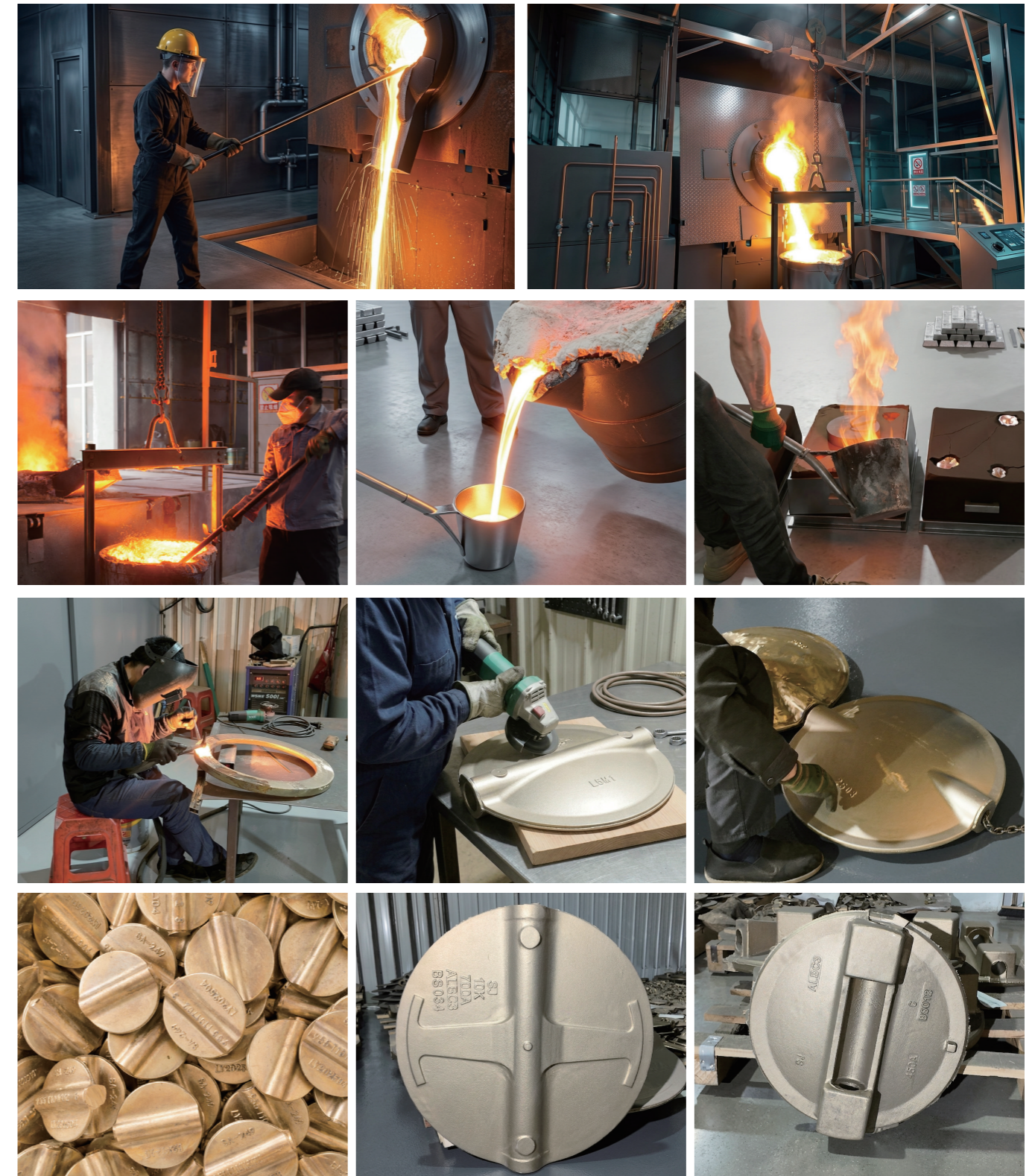
Looking ahead, Cantai will take this as a new starting point, continue to innovate, pioneer progress, and strive for excellence. Upholding the business philosophy of "quality as the foundation, integrity as the core, and mutual benefit for win-win cooperation," we are dedicated to strengthening our corporate culture, enhancing our brand image, and continuously delivering high-quality marine valve products with distinctive Cantai characteristics.



# CERTIFICATES



# FACTORY ENVIRONMENT



# 01 / PRODUCT CENTER

## MARINE CENTERLINE WAFER BUTTERFLY VALVE (SEMI-LUG TYPE)



### Marine Centerline Wafer Butterfly Valve

DN	Half lug	GB/T2506-2005											
		PN6			PN10			PN16			PN25		
		Outer circle	Center distance	Number of holes/thread	Outer circle	Center distance	Number of holes/thread	Outer circle	Center distance	Number of holes/thread	Outer circle	Center distance	Number of holes/thread
40	33				150	110	4-19	165	110	4-19/M16			
50	43	140	110	4-14/M12	165	125	4-19/M16	165	125	4-19/M16	165	125	4-19/M16
65	46	160	130	4-14/M12	185	145	4-19/M16	185	145	4-19/M16	185	145	8-19/M16
80	46	190	150	4-19/M16	200	160	8-19/M16	200	160	8-19/M16	200	160	8-19/M16
100	52	210	170	4-19/M16	220	180	8-19/M16	220	180	8-19/M16	235	190	8-23/M20
125	56	240	200	8-19/M16	250	210	8-19/M16	250	210	8-19/M16	270	220	8-28/M24
150	56	265	225	8-19/M16	285	240	8-23/M20	285	240	8-23/M20	300	250	8-28/M24
200	60	320	280	8-19/M16	340	295	8-23/M20	340	295	12-23/M20	360	310	12-28/M24
250	68	375	335	12-19/M16	395	350	12-23/M20	405	355	12-26/M24	425	370	12-31/M27
300	78	440	395	12-23/M20	445	400	12-23/M20	460	410	12-26/M24	485	430	16-31/M27
350	78	490	455	12-23/M20	505	460	16-23/M20	520	470	16-26/M24	555	490	16-34/M30
400	102	540	495	16-23/M20	565	515	16-26/M24	580	525	16-30/M27	620	550	16-37/M33
450	114	595	550	16-23/M20	615	565	20-26/M24	640	585	20-30/M27	670	600	20-37/M33
500	127	645	600	20-23/M20	670	620	20-26/M24	715	650	20-33/M30	730	660	20-37/M33
550	154				730	675	20-29	775	710	20-33	845	770	20-40/M36
600	154	755	705	20-26/M24	780	725	20-30/M27	840	770	20-36/M33			
650	156				845	780	24-30/M27	860	790	24-36	960	875	24-43/M39
700	163	860	810	24-26/M24	895	840	24-30/M27	910	840	24-36/M33			
750	172				965	900	24-33	980	900	24-36	1085	990	24-49/M45
800	188	975	920	24-31/M27	1015	950	24-33/M30	1025	950	24-39/M36			
900	203	1075	1020	24-31/M27	1115	1050	28-33/M30	1125	1050	28-39/M36	1185	1090	
1000	216	1175	1120	28-31/M27	1230	1160	28-36/M33	1255	1170	28-42/M39	1320	1210	
1200	254	1405	1340	32-34/M30	1455	1380	32-39/M36	1485	1390	32-48/M45	1530	1420	

## Marine Centerline Wafer Butterfly Valve

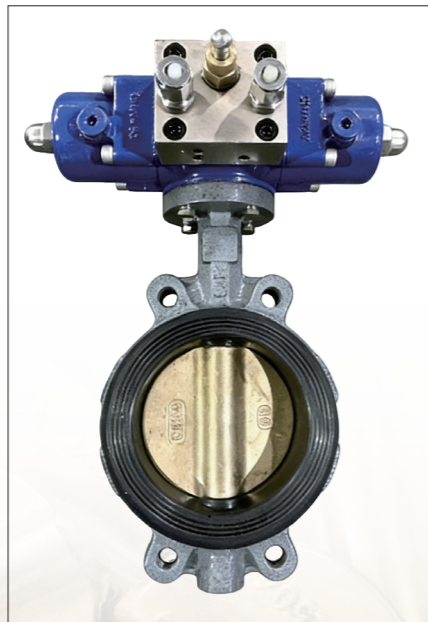


DN	inch	JIS B2220									ANSI B16.5 ANSI 150Lb		
		5k			10k			16k			Outer circle	Center distance	Number of holes/thread
		Outer circle	Center distance	Number of holes/thread	Outer circle	Center distance	Number of holes/thread	Outer circle	Center distance	Number of holes/thread			
40	1.5"	120	95	4-15/M12	140	105	4-19/M16						
50	2"	130	105	4-15/M12	155	120	4-19/M16	155	120	8-19/M16	152.4	120.6	4-19-5/8"
65	2.5"	155	130	4-15/M12	175	140	4-19/M16	175	140	8-19/M16	177.8	139.7	4-19-5/8"
80	3"	180	145	4-19/M16	185	150	8-19/M16	200	160	8-23/M20	190.5	152.4	4-19-5/8"
100	4"	200	165	8-19/M16	210	175	8-19/M16	225	185	8-23/M20	226.6	190.5	8-19-5/8"
125	5"	235	200	8-19/M16	250	210	8-23/M20	270	225	8-25/M22	254	216.9	8-22.2-3/4"
150	6"	265	230	8-19/M16	280	240	8-23/M20	305	260	12-25/M22	279.4	241.3	8-22.2-3/4"
175	7"	300	260	8-23/M20	302	265	12-23/M20						
200	8"	320	280	8-23/M20	330	290	12-23/M20	350	305	12-25/M22	342.9	298.4	8-22.2-3/4"
250	10"	385	345	12-23/M20	400	355	12-25/M22	430	380	12-27/M24	406.4	361.9	12-25.4-7/8"
300	12"	430	390	12-23/M20	445	400	16-25/M22	480	480	16-27/M24	482.6	431.8	12-25.4-7/8"
350	14"	480	435	12-25/M22	490	445	16-25/M22	540	480	16-33/M30	533.4	471.2	12-28.6-1"
400	16"	540	495	16-25/M22	560	510	16-27/M24	605	540	16-33/M30	596.9	539.7	16-28.6-1"
450	18"	605	555	16-25/M22	620	565	20-27/M24	675	605	20-33/M30	635	577.8	16-31.7-UNC11/8"
500	20"	655	605	20-25/M22	675	620	20-27/M24	730	660	20-33/M30	698.5	635	20-31.7-UNC11/8"
550	22"	720	665	20-27/M24	745	680	20-33/M30	845	770	24-39/M36	812.8	749.3	20-34.9-11/4"
600	24"	770	715	20-27/M24	795	730	24-33/M30				927.1	863.6	28-34.9-UNC11/4"
650	26"	825	770	24-27/M24	845	780	24-33/M30						
700	28"	875	820	24-27/M24	905	840	24-33/M30						
750	30"	945	880	24-33/M30	970	900	24-33/M30						
800	32"	995	930	24-33/M30	1020	950	28-33/M30						
850	34"	1045	980	24-33/M30	1070	1000	28-33/M30						
900	36"	1095	1030	24-33/M30	1120	1050	28-33/M30						
1000	40"	1195	1130	28-33/M30	1235	1160	28-39/M36						
1100	42"	1305	1240	28-33/M30	1345	1270	28-39/M36						
1200	44"	1420	1350	32-33/M30	1465	1380	32-39/M36						
1300	48"												
1350	50"	1575	1505	32-33/M30									
1400	54"												

Marine manual concentric butterfly valve with signal



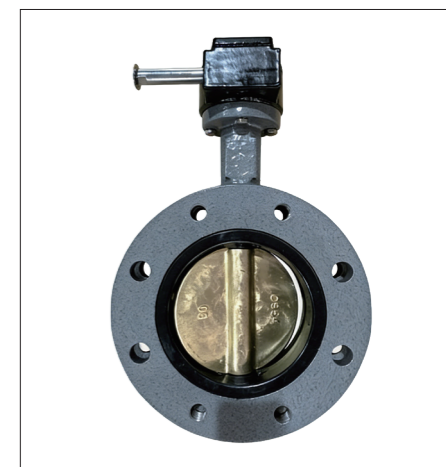
Marine hydraulic concentric butterfly valve



## 02 / PRODUCT CENTER

U-section Butterfly Valve

### U-type Flanged Butterfly Valve



DN	U-section Flange	GB/T2506-2005											
		PN6			PN10			PN16			PN25		
		Outer circle	Center distance	Number of holes/thread	Outer circle	Center distance	Number of holes/thread	Outer circle	Center distance	Number of holes/thread	Outer circle	Center distance	Number of holes/thread
40	33				150	110	4-19	165	110	4-19/M16			
50	43	140	110	4-14/M12	165	125	4-19/M16	165	125	4-19/M16	165	125	4-19/M16
65	46	160	130	4-14/M12	185	145	4-19/M16	185	145	4-19/M16	185	145	8-19/M16
80	46	190	150	4-19/M16	200	160	8-19/M16	200	160	8-19/M16	200	160	8-19/M16
100	52	210	170	4-19/M16	220	180	8-19/M16	220	180	8-19/M16	235	190	8-23/M20
125	56	240	200	8-19/M16	250	210	8-19/M16	250	210	8-19/M16	270	220	8-28/M24
150	56	265	225	8-19/M16	285	240	8-23/M20	285	240	8-23/M20	300	250	8-28/M24
200	60	320	280	8-19/M16	340	295	8-23/M20	340	295	12-23/M20	360	310	12-28/M24
250	68	375	335	12-19/M16	395	350	12-23/M20	405	355	12-26/M24	425	370	12-31/M27
300	78	440	395	12-23/M20	445	400	12-23/M20	460	410	12-26/M24	485	430	16-31/M27
350	78	490	455	12-23/M20	505	460	16-23/M20	520	470	16-26/M24	555	490	16-34/M30
400	102	540	495	16-23/M20	565	515	16-26/M24	580	525	16-30/M27	620	550	16-37/M33
450	114	595	550	16-23/M20	615	565	20-26/M24	640	585	20-30/M27	670	600	20-37/M33
500	127	645	600	20-23/M20	670	620	20-26/M24	715	650	20-33/M30	730	660	20-37/M33
550	154				730	675	20-29	775	710	20-33	845	770	20-40/M36
600	154	755	705	20-26/M24	780	725	20-30/M27	840	770	20-36/M33			
650	156				845	780	24-30/M27	860	790	24-36	960	875	24-43/M39
700	163	860	810	24-26/M24	895	840	24-30/M27	910	840	24-36/M33			
750	172				965	900	24-33	980	900	24-36	1085	990	24-49/M45
800	188	975	920	24-31/M27	1015	950	24-33/M30	1025	950	24-39/M36			
900	203	1075	1020	24-31/M27	1115	1050	28-33/M30	1125	1050	28-39/M36	1185	1090	
1000	216	1175	1120	28-31/M27	1230	1160	28-36/M33	1255	1170	28-42/M39	1320	1210	
1200	254	1405	1340	32-34/M30	1455	1380	32-39/M36	1485	1390	32-48/M45	1530	1420	



DN	inch	JIS B2220						ANSI B16.5 ANSI 150Lb					
		5k			10k			16k					
		Outer circle	Center distance	Number of holes/thread	Outer circle	Center distance	Number of holes/thread	Outer circle	Center distance	Number of holes/thread	Outer circle	Center distance	Number of holes/thread
40	1.5"	120	95	4-15/M12	140	105	4-19/M16						
50	2"	130	105	4-15/M12	155	120	4-19/M16	155	120	8-19/M16	152.4	120.6	4-19-5/8"
65	2.5"	155	130	4-15/M12	175	140	4-19/M16	175	140	8-19/M16	177.8	139.7	4-19-5/8"
80	3"	180	145	4-19/M16	185	150	8-19/M16	200	160	8-23/M20	190.5	152.4	4-19-5/8"
100	4"	200	165	8-19/M16	210	175	8-19/M16	225	185	8-23/M20	226.6	190.5	8-19-5/8"
125	5"	235	200	8-19/M16	250	210	8-23/M20	270	225	8-25/M22	254	216.9	8-22.2-3/4"
150	6"	265	230	8-19/M16	280	240	8-23/M20	305	260	12-25/M22	279.4	241.3	8-22.2-3/4"
175	7"	300	260	8-23/M20	302	265	12-23/M20						
200	8"	320	280	8-23/M20	330	290	12-23/M20	350	305	12-25/M22	342.9	298.4	8-22.2-3/4"
250	10"	385	345	12-23/M20	400	355	12-25/M22	430	380	12-27/M24	406.4	361.9	12-25.4-7/8"
300	12"	430	390	12-23/M20	445	400	16-25/M22	480	480	16-27/M24	482.6	431.8	12-25.4-7/8"
350	14"	480	435	12-25/M22	490	445	16-25/M22	540	480	16-33/M30	533.4	471.2	12-28.6-1"
400	16"	540	495	16-25/M22	560	510	16-27/M24	605	540	16-33/M30	596.9	539.7	16-28.6-1"
450	18"	605	555	16-25/M22	620	565	20-27/M24	675	605	20-33/M30	635	577.8	16-31.7-UNC11/8"
500	20"	655	605	20-25/M22	675	620	20-27/M24	730	660	20-33/M30	698.5	635	20-31.7-UNC11/8"
550	22"	720	665	20-27/M24	745	680	20-33/M30	845	770	24-39/M36	812.8	749.3	20-34.9-11/4"
600	24"	770	715	20-27/M24	795	730	24-33/M30				927.1	863.6	28-34.9-UNC11/4"
650	26"	825	770	24-27/M24	845	780	24-33/M30						
700	28"	875	820	24-27/M24	905	840	24-33/M30				1060.1	977.9	28-41.3-UNC11/4"
750	30"	945	880	24-33/M30	970	900	24-33/M30						
800	32"	995	930	24-33/M30	1020	950	28-33/M30				1168.1	100.5	32-41.2-UNC11/2"
850	34"	1045	980	24-33/M30	1070	1000	28-33/M30						
900	36"	1095	1030	24-33/M30	1120	1050	28-33/M30						
1000	40"	1195	1130	28-33/M30	1235	1160	28-39/M36						
1100	42"	1305	1240	28-33/M30	1345	1270	28-39/M36						
1200	44"	1420	1350	32-33/M30	1465	1380	32-39/M36						
1300	48"												
1350	50"	1575	1505	32-33/M30									
1400	54"												

**Triple Offset  
Flanged  
Butterfly Valve**



## Hydraulic U-type Flanged Butterfly Valve



DN	Triple Offset Flange	GB/T2506-2005											
		PN6			PN10			PN16			PN25		
		Outer circle	Center distance	Number of holes/thread	Outer circle	Center distance	Number of holes/thread	Outer circle	Center distance	Number of holes/thread	Outer circle	Center distance	Number of holes/thread
40					150	110	4-19	165	110	4-19/M16			
50	43	140	110	4-14/M12	165	125	4-19/M16	165	125	4-19/M16	165	125	4-19/M16
65	46	160	130	4-14/M12	185	145	4-19/M16	185	145	4-19/M16	185	145	8-19/M16
80	64	190	150	4-19/M16	200	160	8-19/M16	200	160	8-19/M16	200	160	8-19/M16
100	64	210	170	4-19/M16	220	180	8-19/M16	220	180	8-19/M16	235	190	8-23/M20
125	70	240	200	8-19/M16	250	210	8-19/M16	250	210	8-19/M16	270	220	8-28/M24
150	71	265	225	8-19/M16	285	240	8-23/M20	285	240	8-23/M20	300	250	8-28/M24
200	76	320	280	8-19/M16	340	295	8-23/M20	340	295	12-23/M20	360	310	12-28/M24
250	89	375	335	12-19/M16	395	350	12-23/M20	405	355	12-26/M24	425	370	12-31/M27
300	114	440	395	12-23/M20	445	400	12-23/M20	460	410	12-26/M24	485	430	16-31/M27
350	114	490	455	12-23/M20	505	460	16-23/M20	520	470	16-26/M24	555	490	16-34/M30
400	127	540	495	16-23/M20	565	515	16-26/M24	580	525	16-30/M27	620	550	16-37/M33
450	140	595	550	16-23/M20	615	565	20-26/M24	640	585	20-30/M27	670	600	20-37/M33
500	152	645	600	20-23/M20	670	620	20-26/M24	715	650	20-33/M30	730	660	20-37/M33
550	170				730	675	20-29	775	710	20-33	845	770	20-40/M36
600	178	755	705	20-26/M24	780	725	20-30/M27	840	770	20-36/M33			
650	210				845	780	24-30/M27	860	790	24-36	960	875	24-43/M39
700	230	860	810	24-26/M24	895	840	24-30/M27	910	840	24-36/M33			
750	230				965	900	24-33	980	900	24-36	1085	990	24-49/M45
800	241	975	920	24-31/M27	1015	950	24-33/M30	1025	950	24-39/M36			
900	241	1075	1020	24-31/M27	1115	1050	28-33/M30	1125	1050	28-39/M36	1185	1090	
1000		1175	1120	28-31/M27	1230	1160	28-36/M33	1255	1170	28-42/M39	1320	1210	
1200		1405	1340	32-34/M30	1455	1380	32-39/M36	1485	1390	32-48/M45	1530	1420	

DN	inch	JIS B2220						ANSI B16.5					
		5k			10k			ANSI 150Lb					
		Outer circle	Center distance	Number of holes/thread	Outer circle	Center distance	Number of holes/thread	Outer circle	Center distance	Number of holes/thread			
40	1.5"	120	95	4-15/M12	140	105	4-19/M16						
50	2"	130	105	4-15/M12	155	120	4-19/M16	155	120	8-19/M16	152.4	120.6	4-19-5/8"
65	2.5"	155	130	4-15/M12	175	140	4-19/M16	175	140	8-19/M16	177.8	139.7	4-19-5/8"
80	3"	180	145	4-19/M16	185	150	8-19/M16	200	160	8-23/M20	190.5	152.4	4-19-5/8"
100	4"	200	165	8-19/M16	210	175	8-19/M16	225	185	8-23/M20	226.6	190.5	8-19-5/8"
125	5"	235	200	8-19/M16	250	210	8-23/M20	270	225	8-25/M22	254	216.9	8-22.2-3/4"
150	6"	265	230	8-19/M16	280	240	8-23/M20	305	260	12-25/M22	279.4	241.3	8-22.2-3/4"
175	7"	300	260	8-23/M20	302	265	12-23/M20						
200	8"	320	280	8-23/M20	330	290	12-23/M20	350	305	12-25/M22	342.9	298.4	8-22.2-3/4"
250	10"	385	345	12-23/M20	400	355	12-25/M22	430	380	12-27/M24	406.4	361.9	12-25.4-7/8"
300	12"	430	390	12-23/M20	445	400	16-25/M22	480	480	16-27/M24	482.6	431.8	12-25.4-7/8"
350	14"	480	435	12-25/M22	490	445	16-25/M22	540	480	16-33/M30	533.4	471.2	12-28.6-1"
400	16"	540	495	16-25/M22	560	510	16-27/M24	605	540	16-33/M30	596.9	539.7	16-28.6-1"
450	18"	605	555	16-25/M22	620	565	20-27/M24	675	605	20-33/M30	635	577.8	16-31.7-UNC11/8"
500	20"	655	605	20-25/M22	675	620	20-27/M24	730	660	20-33/M30	698.5	635	20-31.7-UNC11/8"
550	22"	720	665	20-27/M24	745	680	20-33/M30	845	770	24-39/M36	812.8	749.3	20-34.9-11/4"
600	24"	770	715	20-27/M24	795	730	24-33/M30				927.1	863.6	28-34.9-UNC11/4"
650	26"	825	770	24-27/M24	845	780	24-33/M30						
700	28"	875	820	24-27/M24	905	840	24-33/M30				1060.1	977.9	28-41.3-UNC11/4"
750	30"	945	880	24-33/M30	970	900	24-33/M30						
800	32"	995	930	24-33/M30	1020	950	28-33/M30				1168.1	100.5	32-41.2-UNC11/2"
850	34"	1045	980	24-33/M30	1070	1000	28-33/M30						
900	36"	1095	1030	24-33/M30	1120	1050	28-33/M30						
1000	40"	1195	1130	28-33/M30	1235	1160	28-39/M36						
1100	42"	1305	1240	28-33/M30	1345	1270	28-39/M36						
1200	44"	1420	1350	32-33/M30	1465	1380	32-39/M36						
1300	48"												
1350	50"	1575	1505	32-33/M30									
1400	54"												

### 03 / PRODUCT CENTER

#### Marine Concentric Lug Butterfly Valve

## Marine Concentric Full-lug Butterfly Valve

#### Technical Specification

Nominal Diameter: DN32~1200mm

Nominal Pressure: 5K, 10K, 16K, 150Lb, PN6, PN10, PN16, PN25

Body Material: WCB, Ductile Iron, 2507, 2205, 1.4529, C95400, CF8, CF8M, CF3M

Disc Material: CF8, CF8M, CF3, Nylon-coated Ductile Iron, Aluminum Bronze, Duplex Stainless Steel 2205, 2507, 1.4529

Seat Material: NBR, EPDM, VITON, PTFE

Applicable Media: Water, Seawater, Air, Oil, Weakly alkaline liquids, Alcohols, etc.

Operation: Manual, Electric, Pneumatic, Hydraulic, Electro-hydraulic



DN	Lug Type	GB/T2506-2005											
		PN6			PN10			PN16			PN25		
		Outer circle	Center distance	Number of holes/thread	Outer circle	Center distance	Number of holes/thread	Outer circle	Center distance	Number of holes/thread	Outer circle	Center distance	Number of holes/thread
40	33				150	110	4-19	165	110	4-19/M16			
50	43	140	110	4-14/M12	165	125	4-19/M16	165	125	4-19/M16	165	125	4-19/M16
65	46	160	130	4-14/M12	185	145	4-19/M16	185	145	4-19/M16	185	145	8-19/M16
80	46	190	150	4-19/M16	200	160	8-19/M16	200	160	8-19/M16	200	160	8-19/M16
100	52	210	170	4-19/M16	220	180	8-19/M16	220	180	8-19/M16	235	190	8-23/M20
125	56	240	200	8-19/M16	250	210	8-19/M16	250	210	8-19/M16	270	220	8-28/M24
150	56	265	225	8-19/M16	285	240	8-23/M20	285	240	8-23/M20	300	250	8-28/M24
200	60	320	280	8-19/M16	340	295	8-23/M20	340	295	12-23/M20	360	310	12-28/M24
250	68	375	335	12-19/M16	395	350	12-23/M20	405	355	12-26/M24	425	370	12-31/M27
300	78	440	395	12-23/M20	445	400	12-23/M20	460	410	12-26/M24	485	430	16-31/M27
350	78	490	455	12-23/M20	505	460	16-23/M20	520	470	16-26/M24	555	490	16-34/M30
400	102	540	495	16-23/M20	565	515	16-26/M24	580	525	16-30/M27	620	550	16-37/M33
450	114	595	550	16-23/M20	615	565	20-26/M24	640	585	20-30/M27	670	600	20-37/M33
500	127	645	600	20-23/M20	670	620	20-26/M24	715	650	20-33/M30	730	660	20-37/M33
550	154				730	675	20-29	775	710	20-33	845	770	20-40/M36
600	154	755	705	20-26/M24	780	725	20-30/M27	840	770	20-36/M33			
650	156				845	780	24-30/M27	860	790	24-36	960	875	24-43/M39
700	163	860	810	24-26/M24	895	840	24-30/M27	910	840	24-36/M33			
750	172				965	900	24-33	980	900	24-36	1085	990	24-49/M45
800	188	975	920	24-31/M27	1015	950	24-33/M30	1025	950	24-39/M36			
900	203	1075	1020	24-31/M27	1115	1050	28-33/M30	1125	1050	28-39/M36	1185	1090	
1000	216	1175	1120	28-31/M27	1230	1160	28-36/M33	1255	1170	28-42/M39	1320	1210	
1200	254	1405	1340	32-34/M30	1455	1380	32-39/M36	1485	1390	32-48/M45	1530	1420	





DN	inch	JIS B2220						ANSI B16.5 ANSI 150Lb					
		5k			10k			16k			ANSI 150Lb		
		Outer circle	Center distance	Number of holes/thread	Outer circle	Center distance	Number of holes/thread	Outer circle	Center distance	Number of holes/thread	Outer circle	Center distance	Number of holes/thread
40	1.5"	120	95	4-15/M12	140	105	4-19/M16						
50	2"	130	105	4-15/M12	155	120	4-19/M16	155	120	8-19/M16	152.4	120.6	4-19-5/8"
65	2.5"	155	130	4-15/M12	175	140	4-19/M16	175	140	8-19/M16	177.8	139.7	4-19-5/8"
80	3"	180	145	4-19/M16	185	150	8-19/M16	200	160	8-23/M20	190.5	152.4	4-19-5/8"
100	4"	200	165	8-19/M16	210	175	8-19/M16	225	185	8-23/M20	226.6	190.5	8-19-5/8"
125	5"	235	200	8-19/M16	250	210	8-23/M20	270	225	8-25/M22	254	216.9	8-22.2-3/4"
150	6"	265	230	8-19/M16	280	240	8-23/M20	305	260	12-25/M22	279.4	241.3	8-22.2-3/4"
175	7"	300	260	8-23/M20	302	265	12-23/M20						
200	8"	320	280	8-23/M20	330	290	12-23/M20	350	305	12-25/M22	342.9	298.4	8-22.2-3/4"
250	10"	385	345	12-23/M20	400	355	12-25/M22	430	380	12-27/M24	406.4	361.9	12-25.4-7/8"
300	12"	430	390	12-23/M20	445	400	16-25/M22	480	480	16-27/M24	482.6	431.8	12-25.4-7/8"
350	14"	480	435	12-25/M22	490	445	16-25/M22	540	480	16-33/M30	533.4	471.2	12-28.6-1"
400	16"	540	495	16-25/M22	560	510	16-27/M24	605	540	16-33/M30	596.9	539.7	16-28.6-1"
450	18"	605	555	16-25/M22	620	565	20-27/M24	675	605	20-33/M30	635	577.8	16-31.7-UNC11/8"
500	20"	655	605	20-25/M22	675	620	20-27/M24	730	660	20-33/M30	698.5	635	20-31.7-UNC11/8"
550	22"	720	665	20-27/M24	745	680	20-33/M30	845	770	24-39/M36	812.8	749.3	20-34.9-11/4"
600	24"	770	715	20-27/M24	795	730	24-33/M30				927.1	863.6	28-34.9-UNC11/4"
650	26"	825	770	24-27/M24	845	780	24-33/M30						
700	28"	875	820	24-27/M24	905	840	24-33/M30				1060.1	977.9	28-41.3-UNC11/4"
750	30"	945	880	24-33/M30	970	900	24-33/M30						
800	32"	995	930	24-33/M30	1020	950	28-33/M30				1168.1	100.5	32-41.2-UNC11/2"
850	34"	1045	980	24-33/M30	1070	1000	28-33/M30						
900	36"	1095	1030	24-33/M30	1120	1050	28-33/M30						
1000	40"	1195	1130	28-33/M30	1235	1160	28-39/M36						
1100	42"	1305	1240	28-33/M30	1345	1270	28-39/M36						
1200	44"	1420	1350	32-33/M30	1465	1380	32-39/M36						
1300	48"												
1350	50"	1575	1505	32-33/M30									
1400	54"												

## Marine Lug Type Butterfly Valve with Al-Bronze Disc

### Technical Specification

Nominal Diameter: DN32~1200mm

Nominal Pressure: 5K, 10K, 16K, 150Lb, PN6, PN10, PN16, PN25

Body Material: WCB, Ductile Iron, 2507, 2205, 1.4529, C95400, CF8, CF8M, CF3M

Disc Material: CF8, CF8M, CF3, Nylon-coated Ductile Iron, Aluminum Bronze, Duplex Stainless Steel 2205, 2507, 1.4529

Seat Material: NBR, EPDM, VITON, PTFE

Applicable Media: Water, Seawater, Air, Oil, Weakly alkaline liquids, Alcohols, etc.

Operation: Manual, Electric, Pneumatic, Hydraulic, Electro-hydraulic



## Pneumatic Marine Lug Type Butterfly Valve

### Technical Specification

**Nominal Diameter:** DN32~1200mm  
**Nominal Pressure:** 5K, 10K, 16K, 150Lb, PN6, PN10, PN16, PN25  
**Body Material:** WCB, Ductile Iron, 2507, 2205, 1.4529, C95400, CF8, CF8M, CF3M  
**Disc Material:** CF8, CF8M, CF3, Nylon-coated Ductile Iron, Aluminum Bronze, Duplex Stainless Steel 2205, 2507, 1.4529  
**Seat Material:** NBR, EPDM, VITON, PTFE  
**Applicable Media:** Water, Seawater, Air, Oil, Weakly alkaline liquids, Alcohols, etc.  
**Operation:** Manual, Electric, Pneumatic, Hydraulic, Electro-hydraulic



## Fully Fluorine-lined Marine Lug Butterfly Valve

### Technical Specification

**Nominal Diameter:** DN32~1200mm  
**Nominal Pressure:** 5K, 10K, 16K, 150Lb, PN6, PN10, PN16, PN25  
**Body Material:** WCB, Ductile Iron, 2507, 2205, 1.4529, C95400, CF8, CF8M, CF3M  
**Disc Material:** CF8, CF8M, CF3, Nylon-coated Ductile Iron, Aluminum Bronze, Duplex Stainless Steel 2205, 2507, 1.4529  
**Seat Material:** NBR, EPDM, VITON, PTFE  
**Applicable Media:** Water, Seawater, Air, Oil, Weakly alkaline liquids, Alcohols, etc.  
**Operation:** Manual, Electric, Pneumatic, Hydraulic, Electro-hydraulic

DN	Lug Type	GB/T2506-2005											
		PN6			PN10			PN16			PN25		
		Outer circle	Center distance	Number of holes/thread	Outer circle	Center distance	Number of holes/thread	Outer circle	Center distance	Number of holes/thread	Outer circle	Center distance	Number of holes/thread
40	33				150	110	4-19	165	110	4-19/M16			
50	43	140	110	4-14/M12	165	125	4-19/M16	165	125	4-19/M16	165	125	4-19/M16
65	46	160	130	4-14/M12	185	145	4-19/M16	185	145	4-19/M16	185	145	8-19/M16
80	46	190	150	4-19/M16	200	160	8-19/M16	200	160	8-19/M16	200	160	8-19/M16
100	52	210	170	4-19/M16	220	180	8-19/M16	220	180	8-19/M16	235	190	8-23/M20
125	56	240	200	8-19/M16	250	210	8-19/M16	250	210	8-19/M16	270	220	8-28/M24
150	56	265	225	8-19/M16	285	240	8-23/M20	285	240	8-23/M20	300	250	8-28/M24
200	60	320	280	8-19/M16	340	295	8-23/M20	340	295	12-23/M20	360	310	12-28/M24
250	68	375	335	12-19/M16	395	350	12-23/M20	405	355	12-26/M24	425	370	12-31/M27
300	78	440	395	12-23/M20	445	400	12-23/M20	460	410	12-26/M24	485	430	16-31/M27
350	78	490	455	12-23/M20	505	460	16-23/M20	520	470	16-26/M24	555	490	16-34/M30
400	102	540	495	16-23/M20	565	515	16-26/M24	580	525	16-30/M27	620	550	16-37/M33
450	114	595	550	16-23/M20	615	565	20-26/M24	640	585	20-30/M27	670	600	20-37/M33
500	127	645	600	20-23/M20	670	620	20-26/M24	715	650	20-33/M30	730	660	20-37/M33
550	154				730	675	20-29	775	710	20-33	845	770	20-40/M36
600	154	755	705	20-26/M24	780	725	20-30/M27	840	770	20-36/M33			
650	156				845	780	24-30/M27	860	790	24-36	960	875	24-43/M39
700	163	860	810	24-26/M24	895	840	24-30/M27	910	840	24-36/M33			
750	172				965	900	24-33	980	900	24-36	1085	990	24-49/M45
800	188	975	920	24-31/M27	1015	950	24-33/M30	1025	950	24-39/M36			
900	203	1075	1020	24-31/M27	1115	1050	28-33/M30	1125	1050	28-39/M36	1185	1090	
1000	216	1175	1120	28-31/M27	1230	1160	28-36/M33	1255	1170	28-42/M39	1320	1210	
1200	254	1405	1340	32-34/M30	1455	1380	32-39/M36	1485	1390	32-48/M45	1530	1420	

DN	inch	JIS B2220									ANSI B16.5 ANSI 150Lb		
		5k			10k			16k			Outer circle	Center distance	Number of holes/thread
		Outer circle	Center distance	Number of holes/thread	Outer circle	Center distance	Number of holes/thread	Outer circle	Center distance	Number of holes/thread			
40	1.5"	120	95	4-15/M12	140	105	4-19/M16						
50	2"	130	105	4-15/M12	155	120	4-19/M16	155	120	8-19/M16	152.4	120.6	4-19-5/8"
65	2.5"	155	130	4-15/M12	175	140	4-19/M16	175	140	8-19/M16	177.8	139.7	4-19-5/8"
80	3"	180	145	4-19/M16	185	150	8-19/M16	200	160	8-23/M20	190.5	152.4	4-19-5/8"
100	4"	200	165	8-19/M16	210	175	8-19/M16	225	185	8-23/M20	226.6	190.5	8-19-5/8"
125	5"	235	200	8-19/M16	250	210	8-23/M20	270	225	8-25/M22	254	216.9	8-22.2-3/4"
150	6"	265	230	8-19/M16	280	240	8-23/M20	305	260	12-25/M22	279.4	241.3	8-22.2-3/4"
175	7"	300	260	8-23/M20	302	265	12-23/M20						
200	8"	320	280	8-23/M20	330	290	12-23/M20	350	305	12-25/M22	342.9	298.4	8-22.2-3/4"
250	10"	385	345	12-23/M20	400	355	12-25/M22	430	380	12-27/M24	406.4	361.9	12-25.4-7/8"
300	12"	430	390	12-23/M20	445	400	16-25/M22	480	480	16-27/M24	482.6	431.8	12-25.4-7/8"
350	14"	480	435	12-25/M22	490	445	16-25/M22	540	480	16-33/M30	533.4	471.2	12-28.6-1"
400	16"	540	495	16-25/M22	560	510	16-27/M24	605	540	16-33/M30	596.9	539.7	16-28.6-1"
450	18"	605	555	16-25/M22	620	565	20-27/M24	675	605	20-33/M30	635	577.8	16-31.7-UNC11/8"
500	20"	655	605	20-25/M22	675	620	20-27/M24	730	660	20-33/M30	698.5	635	20-31.7-UNC11/8"
550	22"	720	665	20-27/M24	745	680	20-33/M30	845	770	24-39/M36	812.8	749.3	20-34.9-11/4"
600	24"	770	715	20-27/M24	795	730	24-33/M30				927.1	863.6	28-34.9-UNC11/4"
650	26"	825	770	24-27/M24	845	780	24-33/M30						
700	28"	875	820	24-27/M24	905	840	24-33/M30				1060.1	977.9	28-41.3-UNC11/4"
750	30"	945	880	24-33/M30	970	900	24-33/M30						
800	32"	995	930	24-33/M30	1020	950	28-33/M30				1168.1	100.5	32-41.2-UNC11/2"
850	34"	1045	980	24-33/M30	1070	1000	28-33/M30						
900	36"	1095	1030	24-33/M30	1120	1050	28-33/M30						
1000	40"	1195	1130	28-33/M30	1235	1160	28-39/M36						
1100	42"	1305	1240	28-33/M30	1345	1270	28-39/M36						
1200	44"	1420	1350	32-33/M30	1465	1380	32-39/M36						
1300	48"												
1350	50"	1575	1505	32-33/M30									
1400	54"												

# 04 / PRODUCT CENTER

## Marine Concentric Flanged Butterfly Valve

### Marine Concentric Flanged Butterfly Valve

**Technical Specification**

Nominal Diameter: DN50~2200mm  
 Nominal Pressure: 5K, 10K, 16K, 150Lb, PN6, PN10, PN16, PN25  
 Body Material: WCB, Ductile Iron, 2507, 1.4529, C95400, CF8, CF8M, CF3M  
 Disc Material: CF8, CF8M, CF3, Nylon-coated Ductile Iron, Aluminum Bronze, Duplex Stainless Steel 2205, 2507, 1.4529  
 Seat Material: NBR, EPDM, VITON, PTFE  
 Applicable Media: Water, Seawater, Air, Weakly Acidic Liquids, Oil, Weakly Alkaline Liquids, Alcohols, etc.  
 Operation: Manual, Electric, Pneumatic, Hydraulic, Electro-hydraulic



### Marine Aluminum Bronze Flanged Butterfly Valve

**Technical Specification**

Nominal Diameter: DN50~2200mm  
 Nominal Pressure: 5K, 10K, 16K, 150Lb, PN6, PN10, PN16, PN25  
 Body Material: WCB, Ductile Iron, 2507, 1.4529, C95400, CF8, CF8M, CF3M  
 Disc Material: CF8, CF8M, CF3, Nylon-coated Ductile Iron, Aluminum Bronze, Duplex Stainless Steel 2205, 2507, 1.4529  
 Seat Material: NBR, EPDM, VITON, PTFE  
 Applicable Media: Water, Seawater, Air, Weakly Acidic Liquids, Oil, Weakly Alkaline Liquids, Alcohols, etc.  
 Operation: Manual, Electric, Pneumatic, Hydraulic, Electro-hydraulic



### Marine Hydraulic Flanged Butterfly Valve



### Marine Electric Flanged Butterfly Valve



DN	Flanged Butterfly Valve	GB/T2506-2005											
		PN6			PN10			PN16			PN25		
		Outer circle	Center distance	Number of holes/thread	Outer circle	Center distance	Number of holes/thread	Outer circle	Center distance	Number of holes/thread	Outer circle	Center distance	Number of holes/thread
40	108				150	110	4-19	165	110	4-19/M16			
50	108	140	110	4-14/M12	165	125	4-19/M16	165	125	4-19/M16	165	125	4-19/M16
65	112	160	130	4-14/M12	185	145	4-19/M16	185	145	4-19/M16	185	145	8-19/M16
80	114	190	150	4-19/M16	200	160	8-19/M16	200	160	8-19/M16	200	160	8-19/M16
100	127	210	170	4-19/M16	220	180	8-19/M16	220	180	8-19/M16	235	190	8-23/M20
125	140	240	200	8-19/M16	250	210	8-19/M16	250	210	8-19/M16	270	220	8-28/M24
150	140	265	225	8-19/M16	285	240	8-23/M20	285	240	8-23/M20	300	250	8-28/M24
200	152	320	280	8-19/M16	340	295	8-23/M20	340	295	12-23/M20	360	310	12-28/M24
250	165	375	335	12-19/M16	395	350	12-23/M20	405	355	12-26/M24	425	370	12-31/M27
300	178	440	395	12-23/M20	445	400	12-23/M20	460	410	12-26/M24	485	430	16-31/M27
350	190	490	455	12-23/M20	505	460	16-23/M20	520	470	16-26/M24	555	490	16-34/M30
400	216	540	495	16-23/M20	565	515	16-26/M24	580	525	16-30/M27	620	550	16-37/M33
450	222	595	550	16-23/M20	615	565	20-26/M24	640	585	20-30/M27	670	600	20-37/M33
500	229	645	600	20-23/M20	670	620	20-26/M24	715	650	20-33/M30	730	660	20-37/M33
550	267				730	675	20-29	775	710	20-33	845	770	20-40/M36
600	267	755	705	20-26/M24	780	725	20-30/M27	840	770	20-36/M33			
650					845	780	24-30/M27	860	790	24-36	960	875	24-43/M39
700	292	860	810	24-26/M24	895	840	24-30/M27	910	840	24-36/M33			
750	308				965	900	24-33	980	900	24-36	1085	990	24-49/M45
800	318	975	920	24-31/M27	1015	950	24-33/M30	1025	950	24-39/M36			
900	330	1075	1020	24-31/M27	1115	1050	28-33/M30	1125	1050	28-39/M36	1185	1090	
1000	410	1175	1120	28-31/M27	1230	1160	28-36/M33	1255	1170	28-42/M39	1320	1210	
1200	470	1405	1340	32-34/M30	1455	1380	32-39/M36	1485	1390	32-48/M45	1530	1420	

DN	inch	JIS B2220									ANSI B16.5		
		5k			10k			16k			ANSI 150Lb		
		Outer circle	Center distance	Number of holes/thread	Outer circle	Center distance	Number of holes/thread	Outer circle	Center distance	Number of holes/thread	Outer circle	Center distance	Number of holes/thread
40	1.5"	120	95	4-15/M12	140	105	4-19/M16						
50	2"	130	105	4-15/M12	155	120	4-19/M16	155	120	8-19/M16	152.4	120.6	4-19-5/8"
65	2.5"	155	130	4-15/M12	175	140	4-19/M16	175	140	8-19/M16	177.8	139.7	4-19-5/8"
80	3"	180	145	4-19/M16	185	150	8-19/M16	200	160	8-23/M20	190.5	152.4	4-19-5/8"
100	4"	200	165	8-19/M16	210	175	8-19/M16	225	185	8-23/M20	226.6	190.5	8-19-5/8"
125	5"	235	200	8-19/M16	250	210	8-23/M20	270	225	8-25/M22	254	216.9	8-22.2-3/4"
150	6"	265	230	8-19/M16	280	240	8-23/M20	305	260	12-25/M22	279.4	241.3	8-22.2-3/4"
175	7"	300	260	8-23/M20	302	265	12-23/M20						
200	8"	320	280	8-23/M20	330	290	12-23/M20	350	305	12-25/M22	342.9	298.4	8-22.2-3/4"
250	10"	385	345	12-23/M20	400	355	12-25/M22	430	380	12-27/M24	406.4	361.9	12-25.4-7/8"
300	12"	430	390	12-23/M20	445	400	16-25/M22	480	480	16-27/M24	482.6	431.8	12-25.4-7/8"
350	14"	480	435	12-25/M22	490	445	16-25/M22	540	480	16-33/M30	533.4	471.2	12-28.6-1"
400	16"	540	495	16-25/M22	560	510	16-27/M24	605	540	16-33/M30	596.9	539.7	16-28.6-1"
450	18"	605	555	16-25/M22	620	565	20-27/M24	675	605	20-33/M30	635	577.8	16-31.7-UNC1 1/8"
500	20"	655	605	20-25/M22	675	620	20-27/M24	730	660	20-33/M30	698.5	635	20-31.7-UNC1 1/8"
550	22"	720	665	20-27/M24	745	680	20-33/M30	845	770	24-39/M36	812.8	749.3	20-34.9-1 1/4"
600	24"	770	715	20-27/M24	795	730	24-33/M30				927.1	863.6	28-34.9-UNC1 1/4"
650	26"	825	770	24-27/M24	845	780	24-33/M30						
700	28"	875	820	24-27/M24	905	840	24-33/M30				1060.1	977.9	28-41.3-UNC1 1/4"
750	30"	945	880	24-33/M30	970	900	24-33/M30						
800	32"	995	930	24-33/M30	1020	950	28-33/M30				1168.1	100.5	32-41.2-UNC1 1/2"
850	34"	1045	980	24-33/M30	1070	1000	28-33/M30						
900	36"	1095	1030	24-33/M30	1120	1050	28-33/M30						
1000	40"	1195	1130	28-33/M30	1235	1160	28-39/M36						
1100	42"	1305	1240	28-33/M30	1345	1270	28-39/M36						
1200	44"	1420	1350	32-33/M30	1465	1380	32-39/M36						
1300	48"												
1350	50"	1575	1505	32-33/M30									
1400	54"												

## 05 / PRODUCT CENTER

### Resilient Seated Wafer Butterfly Valve (Soft-back)

## Stainless Steel PTFE-lined Wafer Butterfly Valve

#### Technical Specification

Nominal Diameter: DN32~1200mm

Nominal Pressure: 5K, 10K, 16K, 150Lb, PN6, PN10, PN16, PN25

Body Material: WCB, Ductile Iron, 2507, 1.4529, C95400, CF8, CF8M, CF3M

Disc Material: CF8, CF8M, CF3, Nylon-coated Ductile Iron, Aluminum Bronze, Duplex Stainless Steel 2205, 2507, 1.4529

Seat Material: NBR, EPDM, VITON, PTFE

Applicable Media: Water, Seawater, Air, Weakly Acidic Liquids, Oil, Weakly Alkaline Liquids, Alcohols, etc.

Operation: Manual, Electric, Pneumatic, Hydraulic, Electro-hydraulic



DN	Concentric Butterfly Valve	GB/T2506-2005											
		PN6			PN10			PN16			PN25		
		Outer circle	Center distance	Number of holes/thread	Outer circle	Center distance	Number of holes/thread	Outer circle	Center distance	Number of holes/thread	Outer circle	Center distance	Number of holes/thread
40	43				150	110	4-19	165	110	4-19/M16			
50	43	140	110	4-14/M12	165	125	4-19/M16	165	125	4-19/M16	165	125	4-19/M16
65	46	160	130	4-14/M12	185	145	4-19/M16	185	145	4-19/M16	185	145	8-19/M16
80	46	190	150	4-19/M16	200	160	8-19/M16	200	160	8-19/M16	200	160	8-19/M16
100	52	210	170	4-19/M16	220	180	8-19/M16	220	180	8-19/M16	235	190	8-23/M20
125	56	240	200	8-19/M16	250	210	8-19/M16	250	210	8-19/M16	270	220	8-28/M24
150	56	265	225	8-19/M16	285	240	8-23/M20	285	240	8-23/M20	300	250	8-28/M24
200	60	320	280	8-19/M16	340	295	8-23/M20	340	295	12-23/M20	360	310	12-28/M24
250	68	375	335	12-19/M16	395	350	12-23/M20	405	355	12-26/M24	425	370	12-31/M27
300	78	440	395	12-23/M20	445	400	12-23/M20	460	410	12-26/M24	485	430	16-31/M27
350	78	490	455	12-23/M20	505	460	16-23/M20	520	470	16-26/M24	555	490	16-34/M30
400	102	540	495	16-23/M20	565	515	16-26/M24	580	525	16-30/M27	620	550	16-37/M33
450	114	595	550	16-23/M20	615	565	20-26/M24	640	585	20-30/M27	670	600	20-37/M33
500	127	645	600	20-23/M20	670	620	20-26/M24	715	650	20-33/M30	730	660	20-37/M33
550	154				730	675	20-29	775	710	20-33	845	770	20-40/M36
600	154	755	705	20-26/M24	780	725	20-30/M27	840	770	20-36/M33			
650	156				845	780	24-30/M27	860	790	24-36	960	875	24-43/M39
700	163	860	810	24-26/M24	895	840	24-30/M27	910	840	24-36/M33			
750	172				965	900	24-33	980	900	24-36	1085	990	24-49/M45
800	188	975	920	24-31/M27	1015	950	24-33/M30	1025	950	24-39/M36			
900	203	1075	1020	24-31/M27	1115	1050	28-33/M30	1125	1050	28-39/M36	1185	1090	
1000	216	1175	1120	28-31/M27	1230	1160	28-36/M33	1255	1170	28-42/M39	1320	1210	
1200	254	1405	1340	32-34/M30	1455	1380	32-39/M36	1485	1390	32-48/M45	1530	1420	



## Stainless Steel PTFE-lined Wafer Butterfly Valve

### Technical Specification

Nominal Diameter: DN32~1200mm  
 Nominal Pressure: 5K, 10K, 16K, 150Lb, PN6, PN10, PN16, PN25  
 Body Material: WCB, Ductile Iron, 2507, 1.4529, C95400, CF8, CF8M, CF3M  
 Disc Material: CF8, CF8M, CF3, Nylon-coated Ductile Iron, Aluminum Bronze, Duplex Stainless Steel 2205, 2507, 1.4529  
 Seat Material: NBR, EPDM, VITON, PTFE  
 Applicable Media: Water, Seawater, Air, Weakly Acidic Liquids, Oil, Weakly Alkaline Liquids, Alcohols, etc.  
 Operation: Manual, Electric, Pneumatic, Hydraulic, Electro-hydraulic

DN	inch	JIS B2220						ANSI B16.5			ANSI 150Lb			
		5k			10k			16k			Outer circle	Center distance	Number of holes/thread	
Outer circle	Center distance	Number of holes/thread	Outer circle	Center distance	Number of holes/thread	Outer circle	Center distance	Number of holes/thread	Outer circle	Center distance				Number of holes/thread
40	1.5"	120	95	4-15/M12	140	105	4-19/M16							
50	2"	130	105	4-15/M12	155	120	4-19/M16	155	120	8-19/M16	152.4	120.6	4-19-5/8"	
65	2.5"	155	130	4-15/M12	175	140	4-19/M16	175	140	8-19/M16	177.8	139.7	4-19-5/8"	
80	3"	180	145	4-19/M16	185	150	8-19/M16	200	160	8-23/M20	190.5	152.4	4-19-5/8"	
100	4"	200	165	8-19/M16	210	175	8-19/M16	225	185	8-23/M20	226.6	190.5	8-19-5/8"	
125	5"	235	200	8-19/M16	250	210	8-23/M20	270	225	8-25/M22	254	216.9	8-22.2-3/4"	
150	6"	265	230	8-19/M16	280	240	8-23/M20	305	260	12-25/M22	279.4	241.3	8-22.2-3/4"	
175	7"	300	260	8-23/M20	302	265	12-23/M20							
200	8"	320	280	8-23/M20	330	290	12-23/M20	350	305	12-25/M22	342.9	298.4	8-22.2-3/4"	
250	10"	385	345	12-23/M20	400	355	12-25/M22	430	380	12-27/M24	406.4	361.9	12-25.4-7/8"	
300	12"	430	390	12-23/M20	445	400	16-25/M22	480	480	16-27/M24	482.6	431.8	12-25.4-7/8"	
350	14"	480	435	12-25/M22	490	445	16-25/M22	540	480	16-33/M30	533.4	471.2	12-28.6-1"	
400	16"	540	495	16-25/M22	560	510	16-27/M24	605	540	16-33/M30	596.9	539.7	16-28.6-1"	
450	18"	605	555	16-25/M22	620	565	20-27/M24	675	605	20-33/M30	635	577.8	16-31.7-UNC1 1/8"	
500	20"	655	605	20-25/M22	675	620	20-27/M24	730	660	20-33/M30	698.5	635	20-31.7-UNC1 1/8"	
550	22"	720	665	20-27/M24	745	680	20-33/M30	845	770	24-39/M36	812.8	749.3	20-34.9-1 1/4"	
600	24"	770	715	20-27/M24	795	730	24-33/M30				927.1	863.6	28-34.9-UNC1 1/4"	
650	26"	825	770	24-27/M24	845	780	24-33/M30							
700	28"	875	820	24-27/M24	905	840	24-33/M30				1060.1	977.9	28-41.3-UNC1 1/4"	
750	30"	945	880	24-33/M30	970	900	24-33/M30							
800	32"	995	930	24-33/M30	1020	950	28-33/M30				1168.1	100.5	32-41.2-UNC1 1/2"	
850	34"	1045	980	24-33/M30	1070	1000	28-33/M30							
900	36"	1095	1030	24-33/M30	1120	1050	28-33/M30							
1000	40"	1195	1130	28-33/M30	1235	1160	28-39/M36							
1100	42"	1305	1240	28-33/M30	1345	1270	28-39/M36							
1200	44"	1420	1350	32-33/M30	1465	1380	32-39/M36							
1300	48"													
1350	50"	1575	1505	32-33/M30										
1400	54"													

## Aluminum Bronze Wafer Butterfly Valve

### Technical Specification

Nominal Diameter: DN32~1200mm  
 Nominal Pressure: 5K, 10K, 16K, 150Lb, PN6, PN10, PN16, PN25  
 Body Material: WCB, Ductile Iron, 2507, 1.4529, C95400, CF8, CF8M, CF3M  
 Disc Material: CF8, CF8M, CF3, Nylon-coated Ductile Iron, Aluminum Bronze, Duplex Stainless Steel 2205, 2507, 1.4529  
 Seat Material: NBR, EPDM, VITON, PTFE  
 Applicable Media: Water, Seawater, Air, Weakly Acidic Liquids, Oil, Weakly Alkaline Liquids, Alcohols, etc.  
 Operation: Manual, Electric, Pneumatic, Hydraulic, Electro-hydraulic



## Soft-back Wafer Butterfly Valve

### Technical Specification

Nominal Diameter: DN32~1200mm  
 Nominal Pressure: 5K, 10K, 16K, 150Lb, PN6, PN10, PN16, PN25  
 Body Material: WCB, Ductile Iron, 2507, 1.4529, C95400, CF8, CF8M, CF3M  
 Disc Material: CF8, CF8M, CF3, Nylon-coated Ductile Iron, Aluminum Bronze, Duplex Stainless Steel 2205, 2507, 1.4529  
 Seat Material: NBR, EPDM, VITON, PTFE  
 Applicable Media: Water, Seawater, Air, Weakly Acidic Liquids, Oil, Weakly Alkaline Liquids, Alcohols, etc.  
 Operation: Manual, Electric, Pneumatic, Hydraulic, Electro-hydraulic

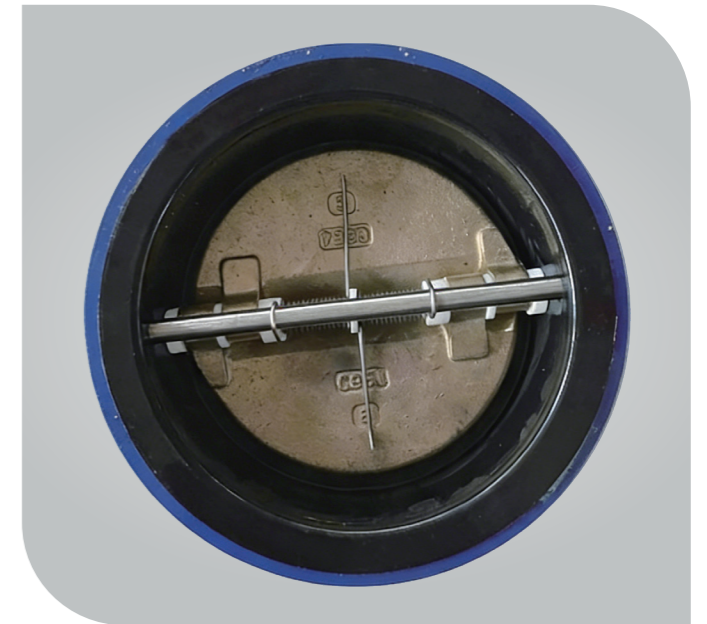


DN	Concentric Butterfly Valve	GB/T2506-2005											
		PN6			PN10			PN16			PN25		
		Outer circle	Center distance	Number of holes/thread	Outer circle	Center distance	Number of holes/thread	Outer circle	Center distance	Number of holes/thread	Outer circle	Center distance	Number of holes/thread
40	43				150	110	4-19	165	110	4-19/M16			
50	43	140	110	4-14/M12	165	125	4-19/M16	165	125	4-19/M16	165	125	4-19/M16
65	46	160	130	4-14/M12	185	145	4-19/M16	185	145	4-19/M16	185	145	8-19/M16
80	46	190	150	4-19/M16	200	160	8-19/M16	200	160	8-19/M16	200	160	8-19/M16
100	52	210	170	4-19/M16	220	180	8-19/M16	220	180	8-19/M16	235	190	8-23/M20
125	56	240	200	8-19/M16	250	210	8-19/M16	250	210	8-19/M16	270	220	8-28/M24
150	56	265	225	8-19/M16	285	240	8-23/M20	285	240	8-23/M20	300	250	8-28/M24
200	60	320	280	8-19/M16	340	295	8-23/M20	340	295	12-23/M20	360	310	12-28/M24
250	68	375	335	12-19/M16	395	350	12-23/M20	405	355	12-26/M24	425	370	12-31/M27
300	78	440	395	12-23/M20	445	400	12-23/M20	460	410	12-26/M24	485	430	16-31/M27
350	78	490	455	12-23/M20	505	460	16-23/M20	520	470	16-26/M24	555	490	16-34/M30
400	102	540	495	16-23/M20	565	515	16-26/M24	580	525	16-30/M27	620	550	16-37/M33
450	114	595	550	16-23/M20	615	565	20-26/M24	640	585	20-30/M27	670	600	20-37/M33
500	127	645	600	20-23/M20	670	620	20-26/M24	715	650	20-33/M30	730	660	20-37/M33
550	154				730	675	20-29	775	710	20-33	845	770	20-40/M36
600	154	755	705	20-26/M24	780	725	20-30/M27	840	770	20-36/M33			
650	156				845	780	24-30/M27	860	790	24-36	960	875	24-43/M39
700	163	860	810	24-26/M24	895	840	24-30/M27	910	840	24-36/M33			
750	172				965	900	24-33	980	900	24-36	1085	990	24-49/M45
800	188	975	920	24-31/M27	1015	950	24-33/M30	1025	950	24-39/M36			
900	203	1075	1020	24-31/M27	1115	1050	28-33/M30	1125	1050	28-39/M36	1185	1090	
1000	216	1175	1120	28-31/M27	1230	1160	28-36/M33	1255	1170	28-42/M39	1320	1210	
1200	254	1405	1340	32-34/M30	1455	1380	32-39/M36	1485	1390	32-48/M45	1530	1420	

DN	inch	JIS B2220									ANSI B16.5		
		5k			10k			16k			ANSI 150Lb		
		Outer circle	Center distance	Number of holes/thread	Outer circle	Center distance	Number of holes/thread	Outer circle	Center distance	Number of holes/thread	Outer circle	Center distance	Number of holes/thread
40	1.5"	120	95	4-15/M12	140	105	4-19/M16						
50	2"	130	105	4-15/M12	155	120	4-19/M16	155	120	8-19/M16	152.4	120.6	4-19-5/8"
65	2.5"	155	130	4-15/M12	175	140	4-19/M16	175	140	8-19/M16	177.8	139.7	4-19-5/8"
80	3"	180	145	4-19/M16	185	150	8-19/M16	200	160	8-23/M20	190.5	152.4	4-19-5/8"
100	4"	200	165	8-19/M16	210	175	8-19/M16	225	185	8-23/M20	226.6	190.5	8-19-5/8"
125	5"	235	200	8-19/M16	250	210	8-23/M20	270	225	8-25/M22	254	216.9	8-22.2-3/4"
150	6"	265	230	8-19/M16	280	240	8-23/M20	305	260	12-25/M22	279.4	241.3	8-22.2-3/4"
175	7"	300	260	8-23/M20	302	265	12-23/M20						
200	8"	320	280	8-23/M20	330	290	12-23/M20	350	305	12-25/M22	342.9	298.4	8-22.2-3/4"
250	10"	385	345	12-23/M20	400	355	12-25/M22	430	380	12-27/M24	406.4	361.9	12-25.4-7/8"
300	12"	430	390	12-23/M20	445	400	16-25/M22	480	480	16-27/M24	482.6	431.8	12-25.4-7/8"
350	14"	480	435	12-25/M22	490	445	16-25/M22	540	480	16-33/M30	533.4	471.2	12-28.6-1"
400	16"	540	495	16-25/M22	560	510	16-27/M24	605	540	16-33/M30	596.9	539.7	16-28.6-1"
450	18"	605	555	16-25/M22	620	565	20-27/M24	675	605	20-33/M30	635	577.8	16-31.7-UNC1 1/8"
500	20"	655	605	20-25/M22	675	620	20-27/M24	730	660	20-33/M30	698.5	635	20-31.7-UNC1 1/8"
550	22"	720	665	20-27/M24	745	680	20-33/M30	845	770	24-39/M36	812.8	749.3	20-34.9-1 1/4"
600	24"	770	715	20-27/M24	795	730	24-33/M30				927.1	863.6	28-34.9-UNC1 1/4"
650	26"	825	770	24-27/M24	845	780	24-33/M30						
700	28"	875	820	24-27/M24	905	840	24-33/M30				1060.1	977.9	28-41.3-UNC1 1/4"
750	30"	945	880	24-33/M30	970	900	24-33/M30						
800	32"	995	930	24-33/M30	1020	950	28-33/M30				1168.1	100.5	32-41.2-UNC1 1/2"
850	34"	1045	980	24-33/M30	1070	1000	28-33/M30						
900	36"	1095	1030	24-33/M30	1120	1050	28-33/M30						
1000	40"	1195	1130	28-33/M30	1235	1160	28-39/M36						
1100	42"	1305	1240	28-33/M30	1345	1270	28-39/M36						
1200	44"	1420	1350	32-33/M30	1465	1380	32-39/M36						
1300	48"												
1350	50"	1575	1505	32-33/M30									
1400	54"												

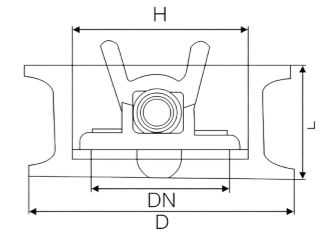
## 06 / PRODUCT CENTER

### Fully Rubber-lined Check Valve



## Wafer Dual Plate Check Valve

Part Name	Material
Body Material	QT450, WCB, 304, 316, 2507, C954, 1.4529
Disc Material	QT450, 304, 316, 2507, C954, 1.4529
Stem Material	2CR13, 304, 316, 2507, K500, Inconel
Seat Ring	NBR, EPDM, VITON
Spring	2Cr13, 304, 316, 2507, 2205, 2507, K500, Inconel



DN	inch	L				Outside Diameter D						
		C1L125	ANSI	GB	800Series	PN6	PN10/PN16	150LB	10K	5K	Series E	
40	1.5"		60	43	48.8	84	92	82	85			
50	2"	54	60	43	48.8	85	107	102	101	90	96	
65	2.5"	54	67	46	48.8	114	127	121	121	115	110	
80	3"	57	73	64	48.8	130	142	133	131	125	128	
100	4"	64	73	64	58.5	140	162	171	156	146	156	
125	5"	70	86	70	61.5	180	192	193	187	181	187	
150	6"	76	98	76	74.5	205	218	219	217	211	214	
200	8"	95	127	89	94	260	273	276	267	257	270	
250	10"	108	146	114	97.5	315	328	336	330	322	328	
300	12"	143	181	114	126	371	378	406	375	362	375	
350	14"	184	184	127	178.5	421	438	448	420	410	444	
400	16"	191	191	140	159	471	488	511	483	470	495	
450	18"	203	203	152	180	526	538	554	546	538	558	
500	20"	212	219	152	213.4	576	592	616	603	593	615	
550	22"	222	222	152	213.4							
600	24"		222	178		678	695	734	714	697	723	
650	26"		222									
700	28"		305	229		783		810	828	807	812	
750	30"		305					864	879	867	891	
800	32"		305	241		888	911	917	936	917	948	
900	36"		318	241								
1000	40"		432	300								
1050	42"		432									
1100	44"		432									
1200	48"		504									
1350	50"		591									
1400	54"		591									

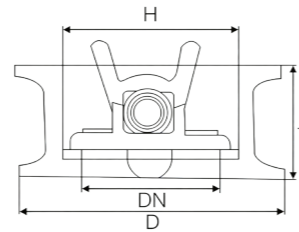
# 07 / PRODUCT CENTER

## Wafer Check Valve



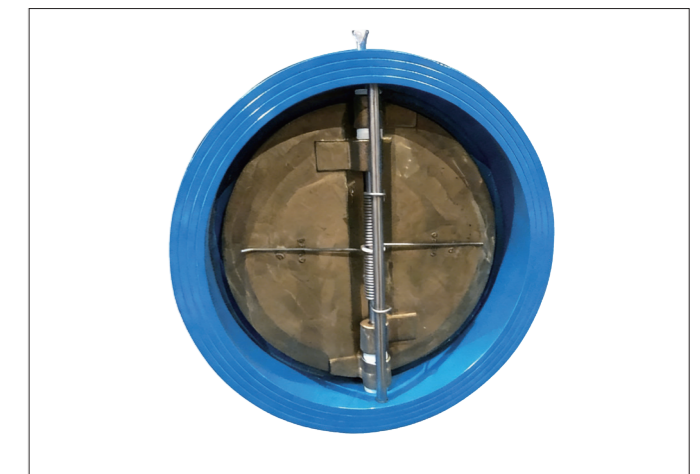
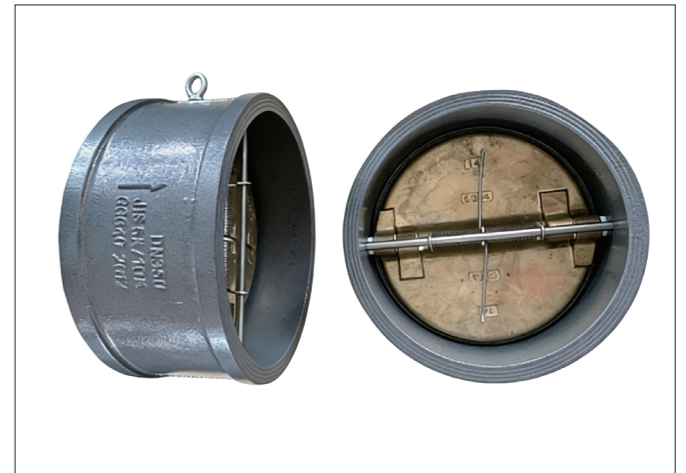
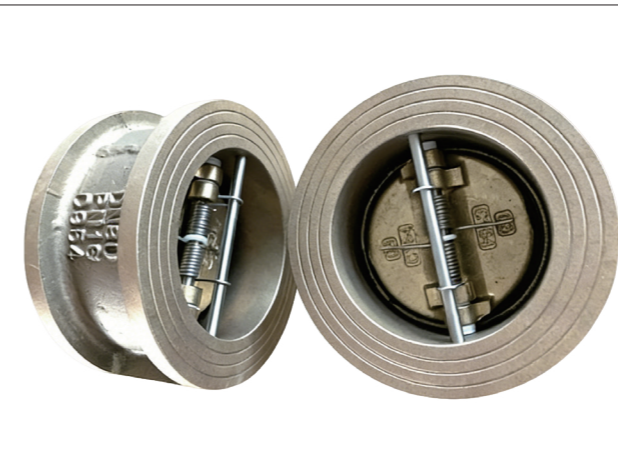
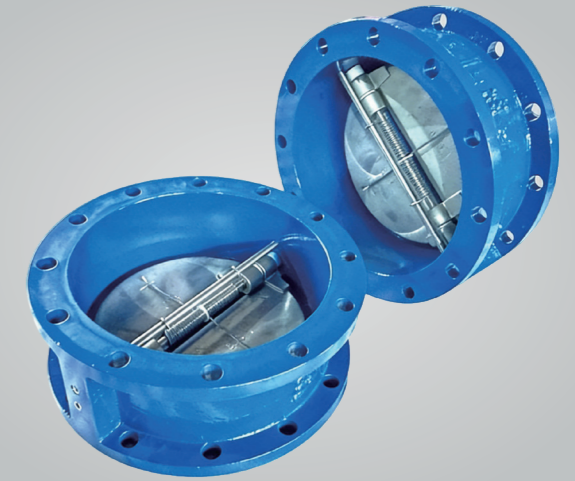
### Aluminum Bronze Butterfly Check Valve

Part Name	Material
Body Material	QT450, WCB, 304, 316, 2507, C954, 1.4529
Disc Material	QT450, 304, 316, 2507, C954, 1.4529
Stem Material	2CR13, 304, 316, 2507, K500, Inconel
Seat Ring	NBR, EPDM, VITON
Spring	2Cr13, 304, 316, 2507, 2205, 2507, K500, Inconel



DN	inch	L				Outside Diameter D						
		C11125	ANSI	GB	800Series	PN6	PN10/PN16	150LB	10K	5K	Series E	
40	1.5"		60	43	48.8	84	92	82	85			
50	2"	54	60	43	48.8	85	107	102	101	90	96	
65	2.5"	54	67	46	48.8	114	127	121	121	115	110	
80	3"	57	73	64	48.8	130	142	133	131	125	128	
100	4"	64	73	64	58.5	140	162	171	156	146	156	
125	5"	70	86	70	61.5	180	192	193	187	181	187	
150	6"	76	98	76	74.5	205	218	219	217	211	214	
200	8"	95	127	89	94	260	273	276	267	257	270	
250	10"	108	146	114	97.5	315	328	336	330	322	328	
300	12"	143	181	114	126	371	378	406	375	362	375	
350	14"	184	184	127	178.5	421	438	448	420	410	444	
400	16"	191	191	140	159	471	488	511	483	470	495	
450	18"	203	203	152	180	526	538	554	546	538	558	
500	20"	212	219	152	213.4	576	592	616	603	593	615	
550	22"	222	222	152	213.4							
600	24"		222	178		678	695	734	714	697	688	723
650	26"		222									
700	28"		305	229		783	810	828	807		812	
750	30"		305				864	879	867		891	
800	32"		305	241		888	911	917	936	917		948
900	36"		318	241								
1000	40"		432	300								
1050	42"		432									
1100	44"		432									
1200	48"		504									
1350	50"		591									
1400	54"		591									

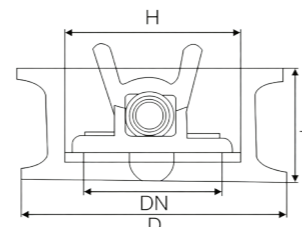
## Check Valve



## Wafer Dual Plate Check Valve



Part Name	Material
Body Material	QT450, WCB, 304, 316, 2507, C954, 1.4529
Disc Material	QT450, 304, 316, 2507, C954, 1.4529
Stem Material	2CR13, 304, 316, 2507, K500, Inconel
Seat Ring	NBR, EPDM, VITON
Spring	2Cr13, 304, 316, 2507, 2205, 2507, K500, Inconel



DN	inch	L				Outside Diameter D						
		C1L125	ANSI	GB	800Series	PN6	PN10/PN16	150LB	10K	5K	Series E	
40	1.5"		60	43	48.8	84	92	82	85			
50	2"	54	60	43	48.8	85	107	102	101	90	96	
65	2.5"	54	67	46	48.8	114	127	121	121	115	110	
80	3"	57	73	64	48.8	130	142	133	131	125	128	
100	4"	64	73	64	58.5	140	162	171	156	146	156	
125	5"	70	86	70	61.5	180	192	193	187	181	187	
150	6"	76	98	76	74.5	205	218	219	217	211	214	
200	8"	95	127	89	94	260	273	276	267	257	270	
250	10"	108	146	114	97.5	315	328	336	330	322	328	
300	12"	143	181	114	126	371	378	406	375	362	375	
350	14"	184	184	127	178.5	421	438	448	420	410	444	
400	16"	191	191	140	159	471	488	511	483	470	495	
450	18"	203	203	152	180	526	538	554	546	538	530	558
500	20"	212	219	152	213.4	576	592	616	603	593	590	615
550	22"	222	222	152	213.4							
600	24"		222	178		678	695	734	714	697	688	723
650	26"		222									
700	28"		305	229		783	810	828	807		812	
750	30"		305				864	879	867		891	
800	32"		305	241		888	911	917	936	917	948	
900	36"		318	241								
1000	40"		432	300								
1050	42"		432									
1100	44"		432									
1200	48"		504									
1350	50"		591									
1400	54"		591									

## 08 / PRODUCT CENTER

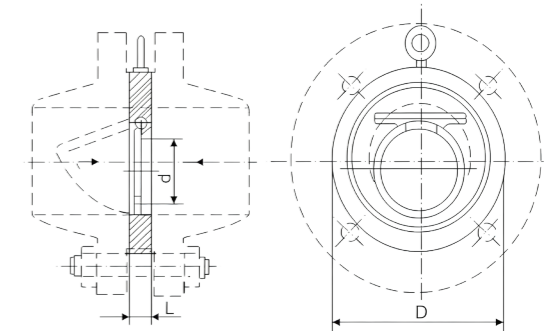
### Plate Type Check Valve

## Plate Type Check Valve

Plate check valve is an ultra-thin type of check valve, which has the advantages of simple structure, beautiful appearance, light weight, convenient installation, etc. The valve is mainly used in the water supply system, petroleum, chemical industry, metallurgy and other industrial sectors, especially for the installation space has a limited place.

#### Technical data

Nominal Pressure PN (MPa)	1.0	1.6	2.5
Strength test (MPa)	1.5	2.4	3.75
Seal test (MPa)	1.1	1.76	2.75
Working Temperature °C	<400°C (Hard seal) <80°C (Max. <250°C) (Soft seal)		
Suitable Mediums	Oil, water, acids, alkalis and other liquids		



#### Material of main parts

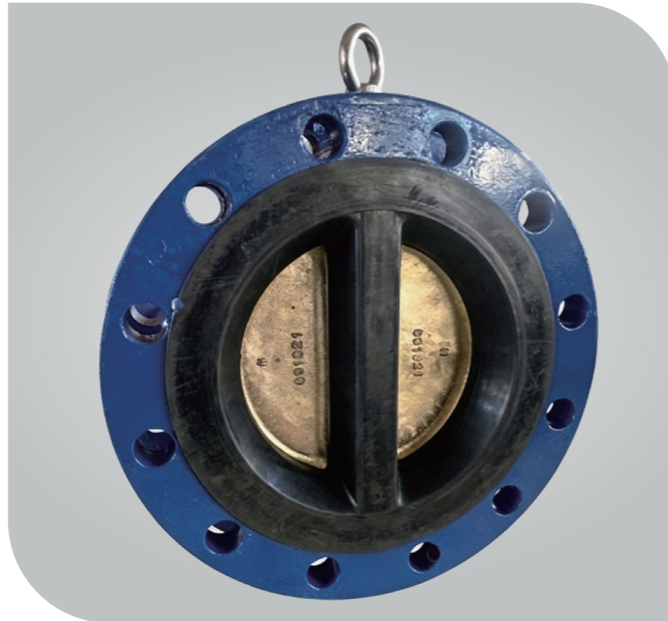
Part name	Valve body, valve disc	Seat ring
Material	Carbon steel, stainless steel, copper	NBR, EPDM, PTFE, stainless steel

#### Fundamental dimensions for CB/T3819-1999 type

DN(mm)	d	L			D			(kg) Weight		
		PN1.0MPa	PN1.6MPa	PN2.5MPa	PN1.0MPa	PN1.6MPa	PN2.5MPa	PN1.0MPa	PN1.6MPa	PN2.5MPa
50	25	14	19	19	108	108	108	0.9	1.1	1.2
65	38	14	19	19	128	128	128	1.2	1.5	1.9
80	48	14	19	19	142	142	142	1.5	1.8	2.2
100	72	18	19	19	162	162	162	2.4	2.7	3.2
125	95	18	19	19	192	192	192	3.3	3.8	4.4
150	114	18	22	26	218	218	218	4.7	5.3	5.7
200	140	22	29	32	273	273	273	8	9.4	10
250	188	26	29	38	329	329	329	13.5	14.8	17.2
300	216	32	38	44	378	384	390	21	26	28
350	263	38	44	52	438	444	500	35	42	47
400	305	44	51	62	489	496	542	49	59	68
450	358	50	60	68	539	558	696	67	76	90
500	406	56	64	72	594	618	710	91	99	120
600	485	62	70	76	695	732	802	132	157	165
700	565	70	76	80	710	802	916	150	186	190
800	622	76	80	95	802	912	1014	170	206	216
900	703	80	95	127	916	1012	1110	190	310	345
1000	815	95	127	132	1014	1126	1220	220	402	438

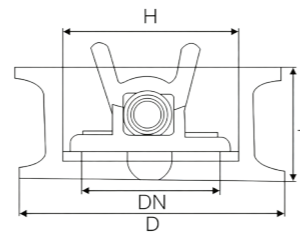
# 09 / PRODUCT CENTER

## Flanged Check Valve



# Flanged Check Valve

Part Name	Material
Body Material	QT450, WCB, 304, 316, 2507, C954, 1.4529
Disc Material	QT450, 304, 316, 2507, C954, 1.4529
Stem Material	2CR13, 304, 316, 2507, K500, Inconel
Seat Ring	NBR, EPDM, VITON
Spring	2Cr13, 304, 316, 2507, 2205, 2507, K500, Inconel



DN	inch	Outside Diameter D									
		C1L125	ANSI	GB	800Series	PN6	PN10/PN16	150LB	10K	5K	Series E
40	1.5"		60	43	48.8	84	92	82	85		
50	2"	54	60	43	48.8	85	107	102	101	90	96
65	2.5"	54	67	46	48.8	114	127	121	121	115	110
80	3"	57	73	64	48.8	130	142	133	131	125	128
100	4"	64	73	64	58.5	140	162	171	156	146	156
125	5"	70	86	70	61.5	180	192	193	187	181	187
150	6"	76	98	76	74.5	205	218	219	217	211	214
200	8"	95	127	89	94	260	273	276	267	257	270
250	10"	108	146	114	97.5	315	328	336	330	322	328
300	12"	143	181	114	126	371	378	406	375	362	375
350	14"	184	184	127	178.5	421	438	448	420	410	444
400	16"	191	191	140	159	471	488	511	483	470	495
450	18"	203	203	152	180	526	538	554	546	538	558
500	20"	212	219	152	213.4	576	592	616	603	593	615
550	22"	222	222	152	213.4						
600	24"		222	178		678	695	734	714	697	688
650	26"		222								
700	28"		305	229		783		810	828	807	812
750	30"		305					864	879	867	891
800	32"		305	241		888	911	917	936	917	948
900	36"		318	241							
1000	40"		432	300							
1050	42"		432								
1100	44"		432								
1200	48"		504								
1350	50"		591								
1400	54"		591								

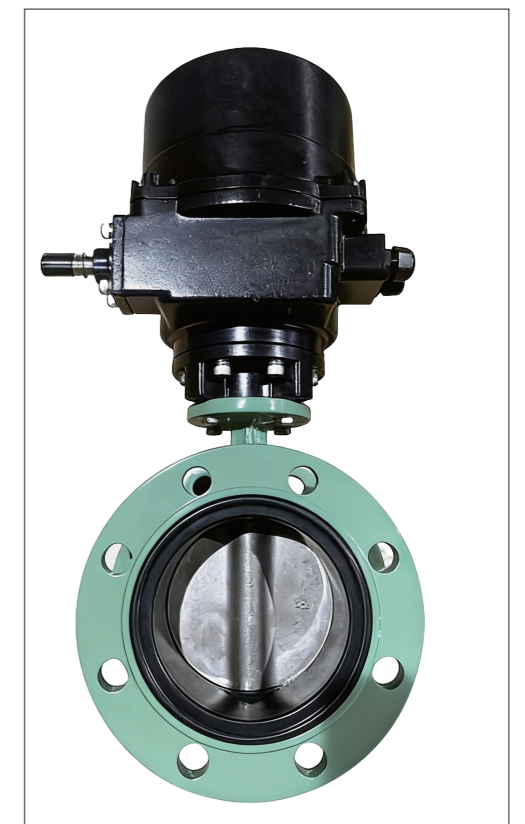
# 10 / PRODUCT CENTER

## Electric Valves



# Electric Concentric Wafer Butterfly Valve

## Electric Flanged Butterfly Valve

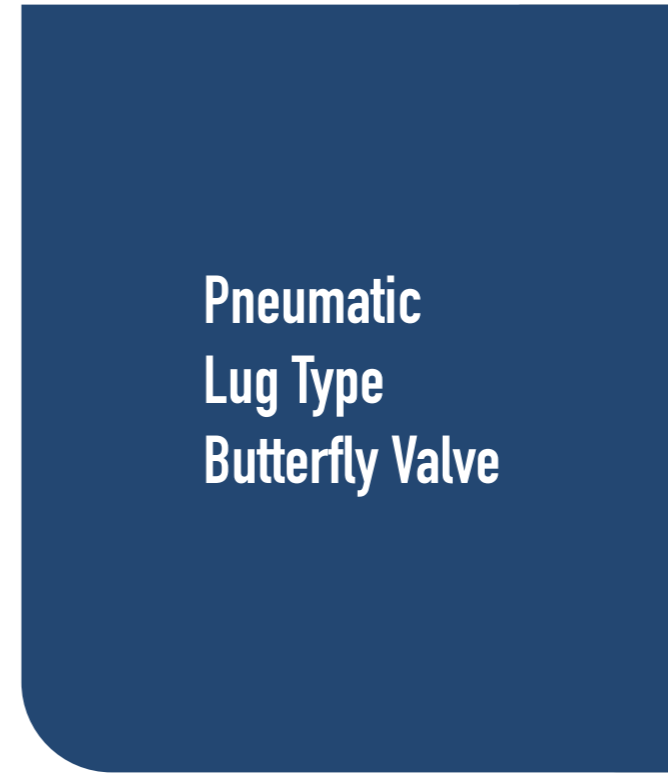


# 11 / PRODUCT CENTER

## Pneumatically Actuated Valve



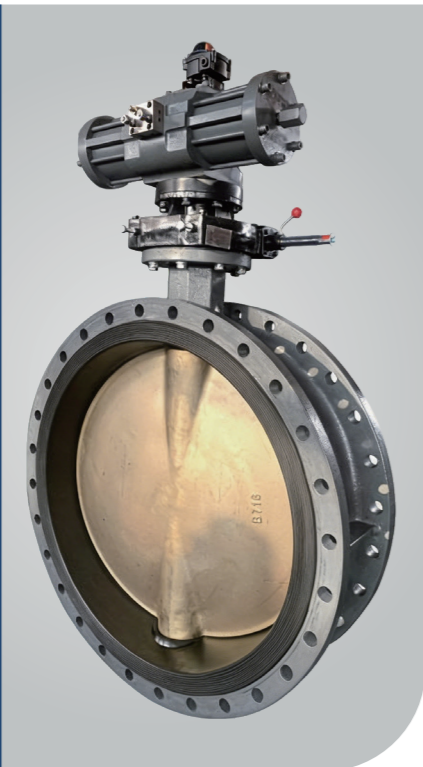
Pneumatic  
Concentric  
Wafer  
Butterfly Valve



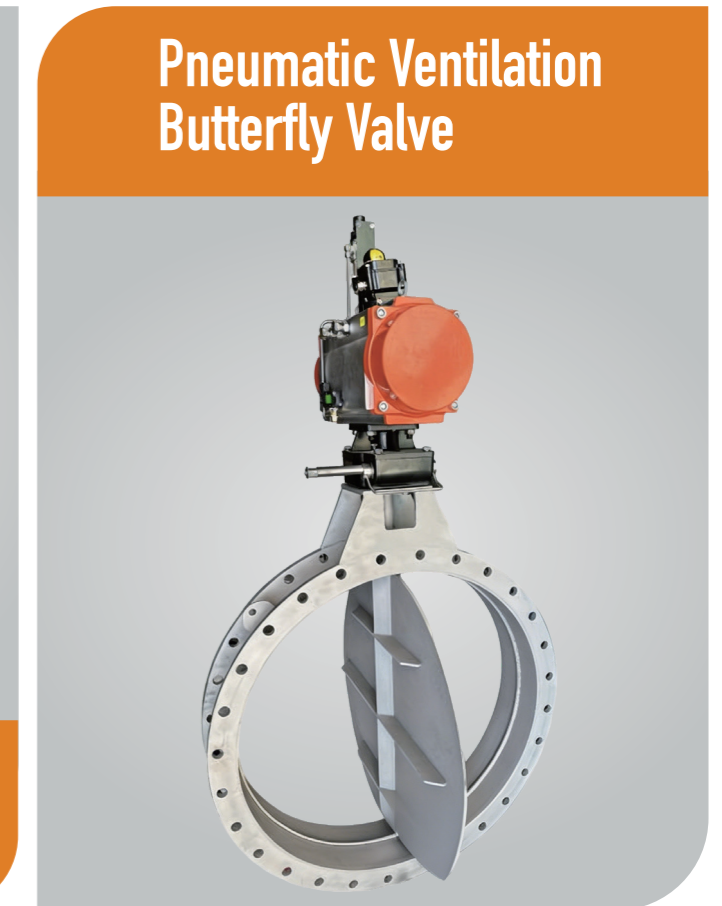
Pneumatic  
Lug Type  
Butterfly Valve



Pneumatic  
Flanged  
Butterfly  
Valve



Pneumatic U-section  
Flanged Butterfly Valve



Pneumatic Ventilation  
Butterfly Valve

## Cast Copper Products



## Cast Aluminum Products

